

PLANNING (DEVELOPMENT CONTROL) COMMITTEE

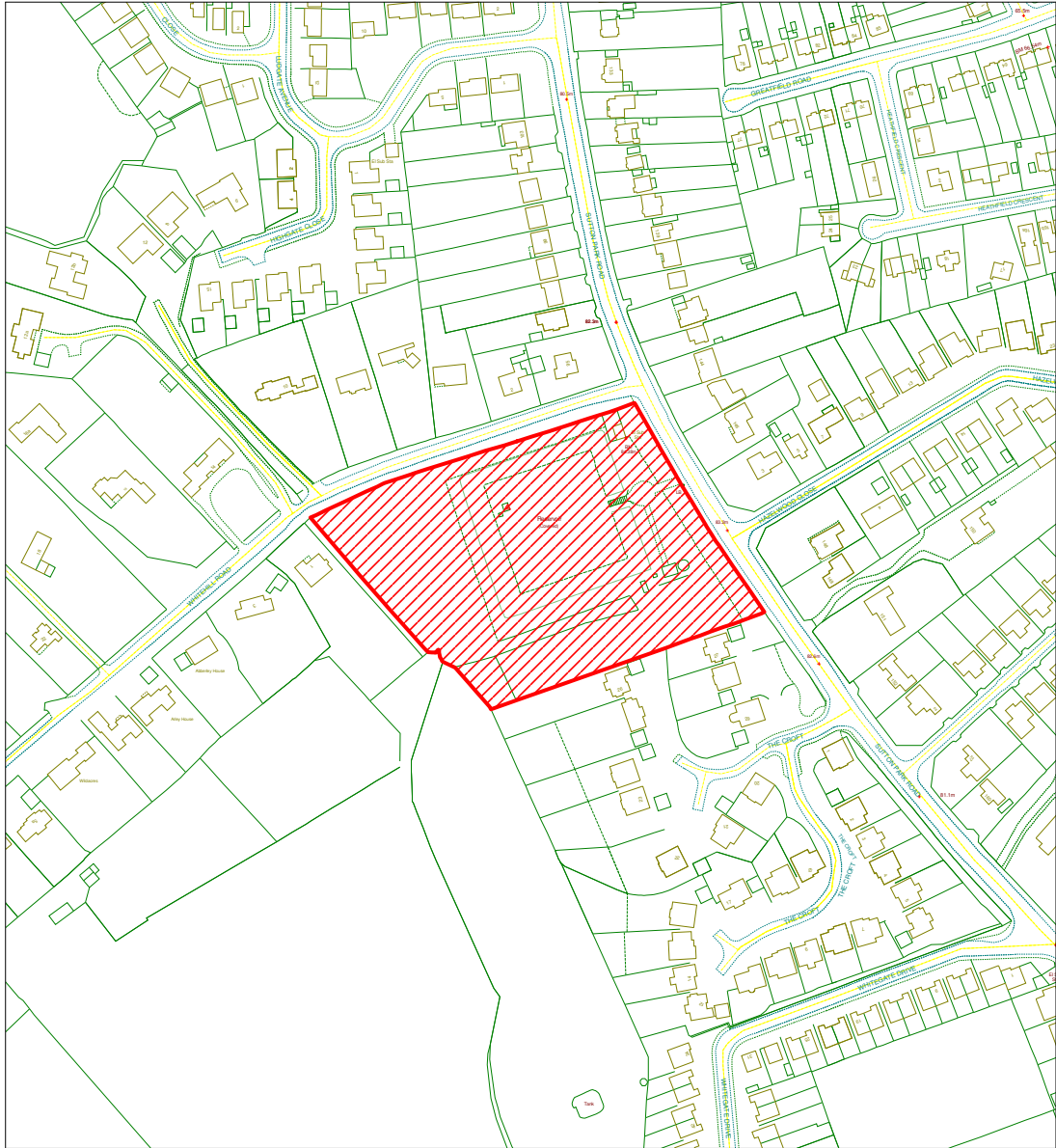
09/0061

Date:- 29 April 2009

OS sheet:- SO8175NW

Scale:- 1:2500

Based upon the Ordnance Survey mapping with the permission of the Controller of Her Majesty's Stationary Office Crown copyright (C).
Unauthorised reproduction infringes Crown Copyright and may lead to prosecution or civil proceedings. Licence number 100018317.



PLANNING AND REGULATORY SERVICES

**Sutton Reservoir
Sutton Park Road
Kidderminster**



Duke House, Clensmore Street, Kidderminster, Worcs, DY10 2JX. Telephone: 01562 732928. Fax: 01562 732556

PLANNING (DEVELOPMENT CONTROL) COMMITTEE

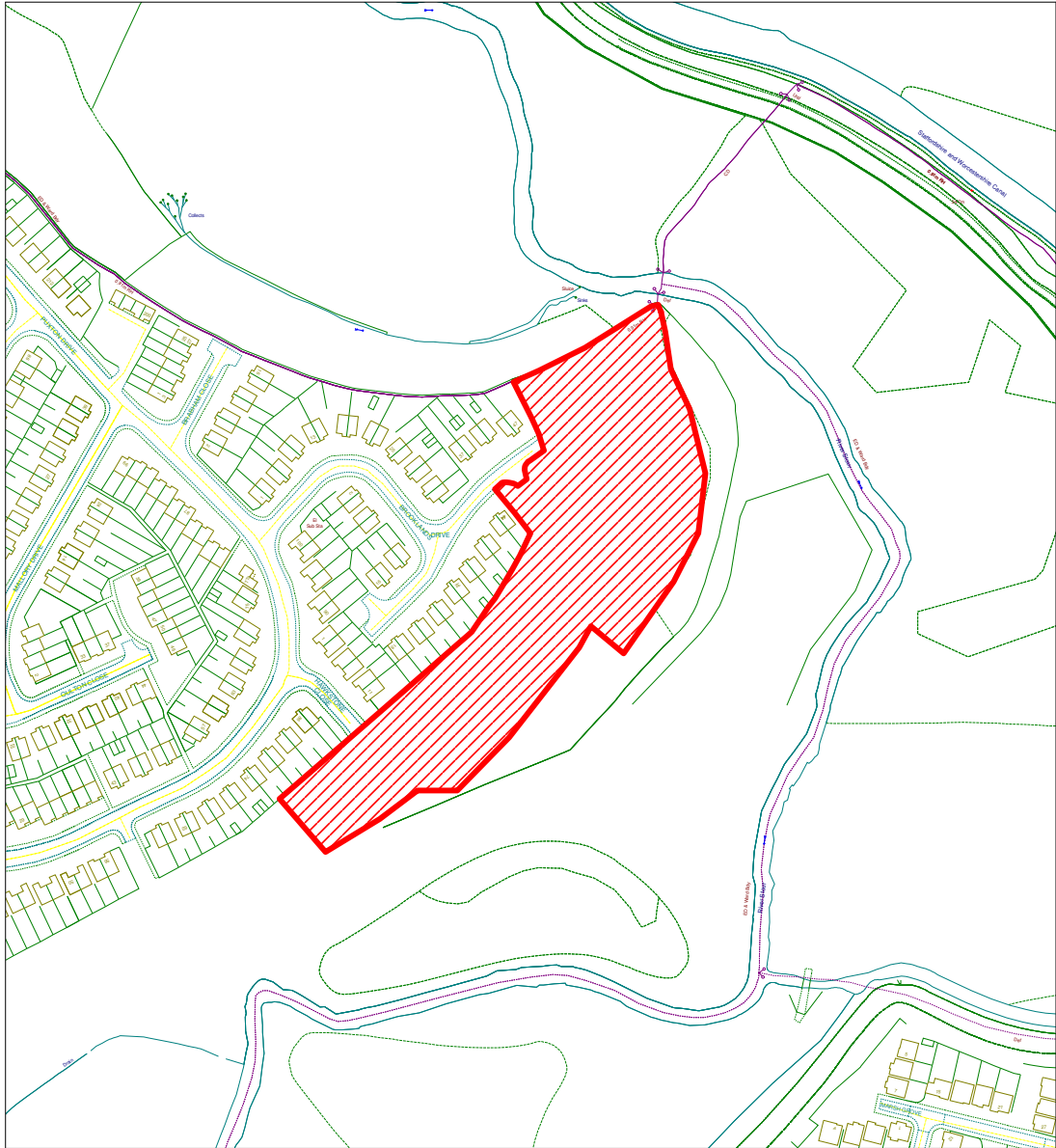
09/0066

Date:- 29 April 2009

OS sheet:- SO8278SE

Scale:- 1:2500

Based upon the Ordnance Survey mapping with the permission of the Controller of Her Majesty's Stationery Office Crown copyright (C).
Unauthorised reproduction infringes Crown Copyright and may lead to prosecution or civil proceedings. Licence number 100018317.



PLANNING AND REGULATORY SERVICES
Land off Puxton Drive
Kidderminster
DY11 5HY



Duke House, Clensmore Street, Kidderminster, Worcs, DY10 2JX. Telephone: 01562 732928. Fax: 01562 732556

PLANNING (DEVELOPMENT CONTROL) COMMITTEE

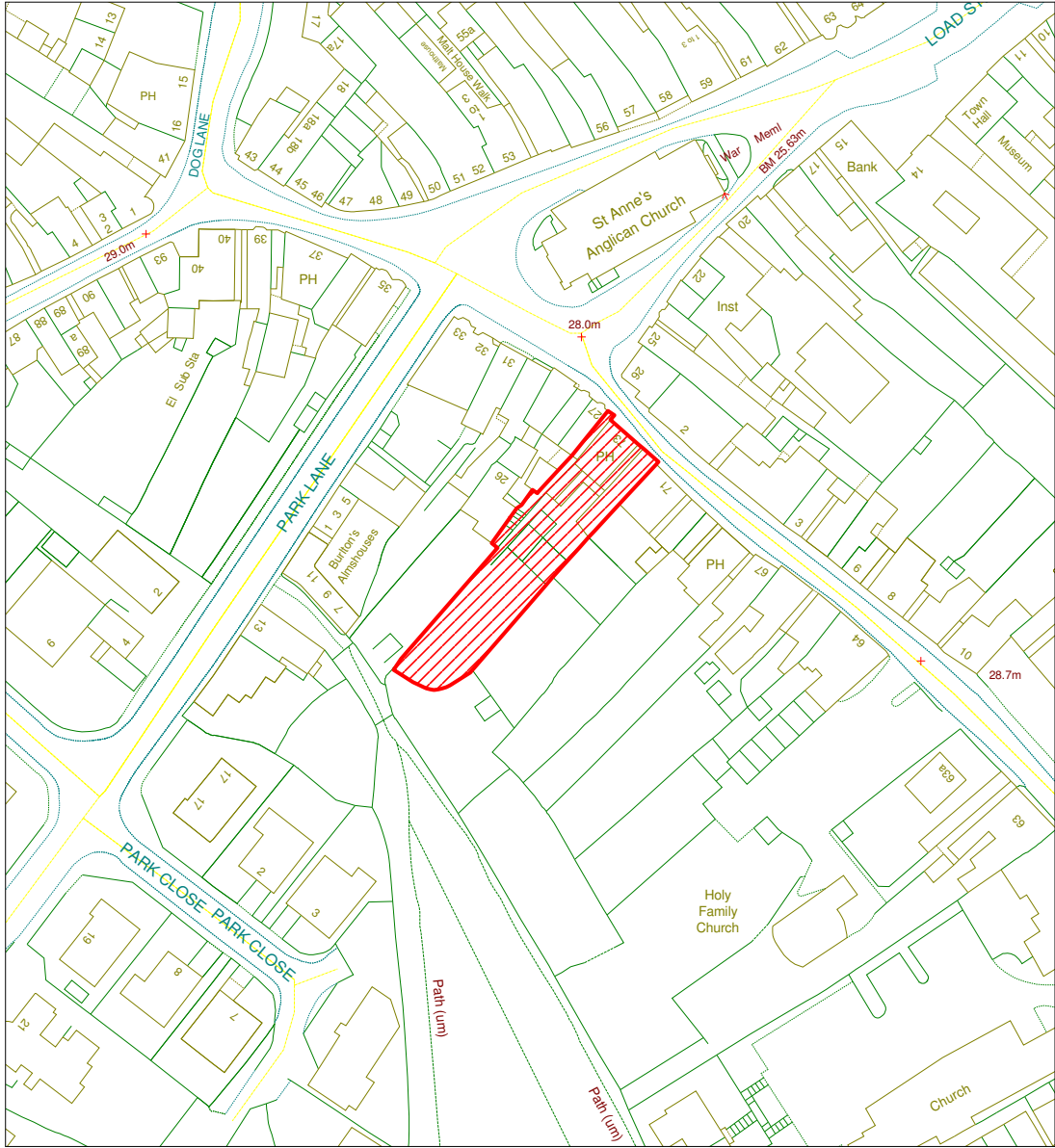
09/0230/0231

Date:- 29 April 2009

OS sheet:- S07875SE

Scale:- 1:1000

Based upon the Ordnance Survey mapping with the permission of the Controller of Her Majesty's Stationery Office Crown copyright (C).
Unauthorised reproduction infringes Crown Copyright and may lead to prosecution or civil proceedings. Licence number 100018317.



PLANNING AND REGULATORY SERVICES

Talbot Inn
73 High Street
Bewdley
DY12 2DJ

Duke House, Clensmore Street, Kidderminster, Worcs, DY10 2JX. Telephone: 01562 732928. Fax: 01562 732556

