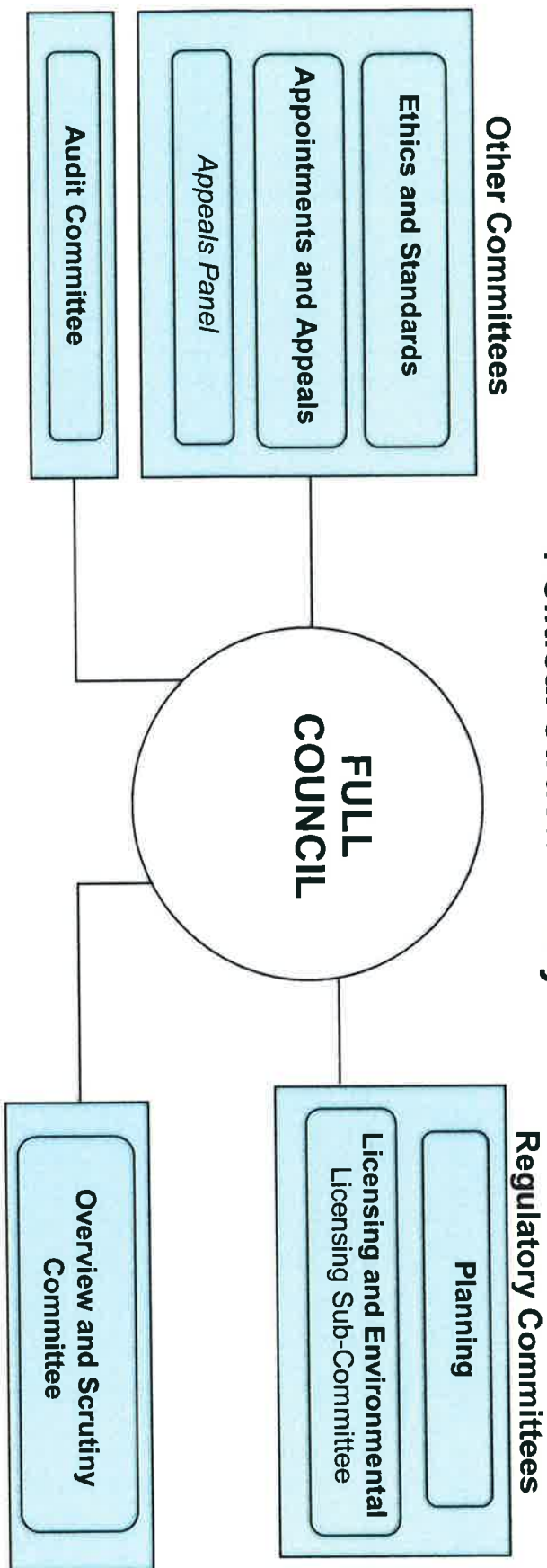




Political Structure May 2015



The Cabinet					
<p>Cllr Marcus Hart Leader of the Council and Cabinet Member for Strategy</p> <p>Strategic Policy Co-ordination National and Regional Influence</p> <p>Oversight of strategic projects inc. Leisure Centre, Wyre Forest House and Depot Relocation Project</p> <p>Localism agenda inc. Asset Transfers: relations with Parish Councils</p> <p>Emergency Planning Partnerships, policy & performance</p> <p>Communication and Branding</p>	<p>Cllr Ian Hardiman Deputy Leader and Cabinet Member for Operational Services</p> <p>Parks and Open Spaces</p> <p>Grounds Maintenance</p> <p>Waste Reduction</p> <p>Refuse Collection and Recycling</p> <p>Fleet Management</p> <p>Street Cleansing</p> <p>Public Conveniences</p> <p>Cemeteries</p> <p>Corporate Theme: Health and Safety</p>	<p>Cllr Nathan Desmond Cabinet Member for Resources</p> <p>Finance and Audit</p> <p>Legal Services</p> <p>Democratic Services</p> <p>Human Resources</p> <p>Building Maintenance and Facilities Management</p>	<p>Cllr John Campion Cabinet Member for Planning & Economic Regeneration</p> <p>Forward Planning</p> <p>Development Control</p> <p>Land Charges</p> <p>Economic Development & Regeneration</p> <p>Town Centres</p> <p>Tourism</p> <p>Regeneration Schemes including extension of Weavers Wharf, Exchange Square, Bewdley Medical Practice, Lloyds Garage Site</p> <p>Development of assets to support regeneration and increase income</p>	<p>Cllr Sally Chambers Cabinet Member for Health, Well-Being and Housing</p> <p>Housing inc Registered Social Landlords, Private Sector & Homelessness</p> <p>Health and Well-Being</p> <p>Cultural Services</p> <p>Countryside Service</p> <p>Community Safety</p> <p>Corporate Themes: Quality & Diversity, sustainability, relations with Voluntary Sector</p>	<p>Cllr Sara Fearn Cabinet Member for Transformational Change</p> <p>Wyre Forest Forward Transformational Change</p> <p>Revenues and Benefits</p> <p>Customer Services</p> <p>Information and Communication Technology</p> <p>Corporate Theme: Income Generation</p>