

FORM 1

NOTICE OF DELEGATION OF DECISION TO CABINET MEMBER BY STRONG LEADER

Section 15(4) of the Local Government Act 2000, the senior executive member may discharge any of the functions that are the responsibility of the Cabinet or may arrange for them to be discharged by another member of the Cabinet or Officer. On 1st December 2010, the Council adopted the Strong Leader Model for Corporate Governance 2011 as required under Part 3 of The Local Government and Public Involvement in Health Act 2007 (The 2007 Act).

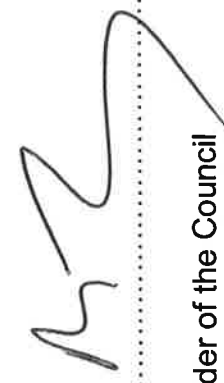
I, Cllr Marcus Hart, as Strong Leader, delegate the decision to remove 19 Car Parking Spaces at Aldi Store Car Park and 2 spaces at Pike Mills Car Park, New Road, Kidderminster from the Off-Street Parking Places Order to the Cabinet Member detailed below:

Councillor John Campion
Cabinet Member for Planning and Economic Regeneration

5th November, 2011

Dated: _____

Signed:



Leader of the Council

FORM 2

NOTICE OF DECISION OF CABINET MEMBER

Pursuant Section 15(4) of the Local Government Act 2000, as amended by section 63 of the Local Government and Public Involvement in Health Act 2007, the senior executive member may discharge any of the functions that are the responsibility of the Cabinet or may arrange for them to be discharged by another member of the Cabinet or Officer. On 1st December 2010, the Council adopted the Strong Leader Model for Corporate Governance 2011 as required under Part 3 of The Local Government and Public Involvement in Health Act 2007 (The 2007 Act).

In accordance with the authority delegated to me by the Leader, I have made the following decision:

Subject	Decision	Reason for decision	Date for Decision to be taken
Removal of parking spaces at Aldi and Pike Mills Car Parks, Kidderminster from Off-Street Parking Places Order to enable Aldi Stores Ltd to extend their existing store (subject to planning consent).	Variation of Order to allow for loss of 19 parking spaces on land owned by Aldi but managed by WFDC plus a further 2 spaces within the car park land owned by WFDC (to allow access into Aldi), in return for compensation payment of £99,999.	To generate a capital receipt and enable the extension of the Aldi store.	

I confirm that the appropriate statutory officer consultation has taken place with regard to this decision.

Dated: 5th November 2015.

Signed: 
 Councillor: SP Cameron
 Cabinet Member

To: **Cabinet Member for Planning and Economic Regeneration**

From: **Director of Economic Prosperity and Place**

Date 04.11.15

Removal of parking spaces at Aldi Surface Car Park and Pike Mills Surface Car Park, Kidderminster from Off-Street Parking Places Order

1. PURPOSE

To facilitate the extension of the existing Aldi Store at Green Street, Kidderminster and generate a one-off capital receipt in return.

2. RECOMMENDATION

It is recommended that The Wyre Forest District Council (Off Street Parking Places) Order 2015 is varied to allow for a loss of 21 car parking spaces to enable the extension of the Aldi store to go ahead (subject to planning).

3. BACKGROUND

There is currently a S106 Agreement in place which allows for 62 car parking spaces within the ownership of Aldi Stores Limited to be maintained and operated by Wyre Forest District Council. The proposed extension of the Aldi store will reduce the car parking spaces to 43, therefore reducing the Council's income from the car park. A further 2 spaces will be lost in the Pike Mills Car park on land owned by Wyre Forest District Council to allow access to the extended store.

4. FINANCIAL IMPLICATIONS

It is estimated that the removal of the spaces will reduce net income to the Council by £11,781 pa. Aldi have agreed to make a one-off payment of £99,999 to the Council to compensate for the loss of income. All costs incurred in this transaction, including the removal of spaces from the Off-Street Parking Places Order and the amendment to the S106 Agreement, are to be met by Aldi. The receipt to the Council of £99,999 will be used to support future car park improvement works.

5. LEGAL AND POLICY IMPLICATIONS

As stated in the Table 4 of the Scheme of Delegation, the transfer of land for under £100,000 is delegated to the Cabinet Lead Member.

6. CONCLUSION

It is recommended that the spaces are removed from the Order to facilitate the proposed store extension and generate a receipt of £99,999 for the Council.

7. RISK MANAGEMENT

Transfer of the spaces to Aldi is conditional upon their gaining planning consent for the store extension.

8. EQUALITY IMPACT NEEDS ASSESSMENT

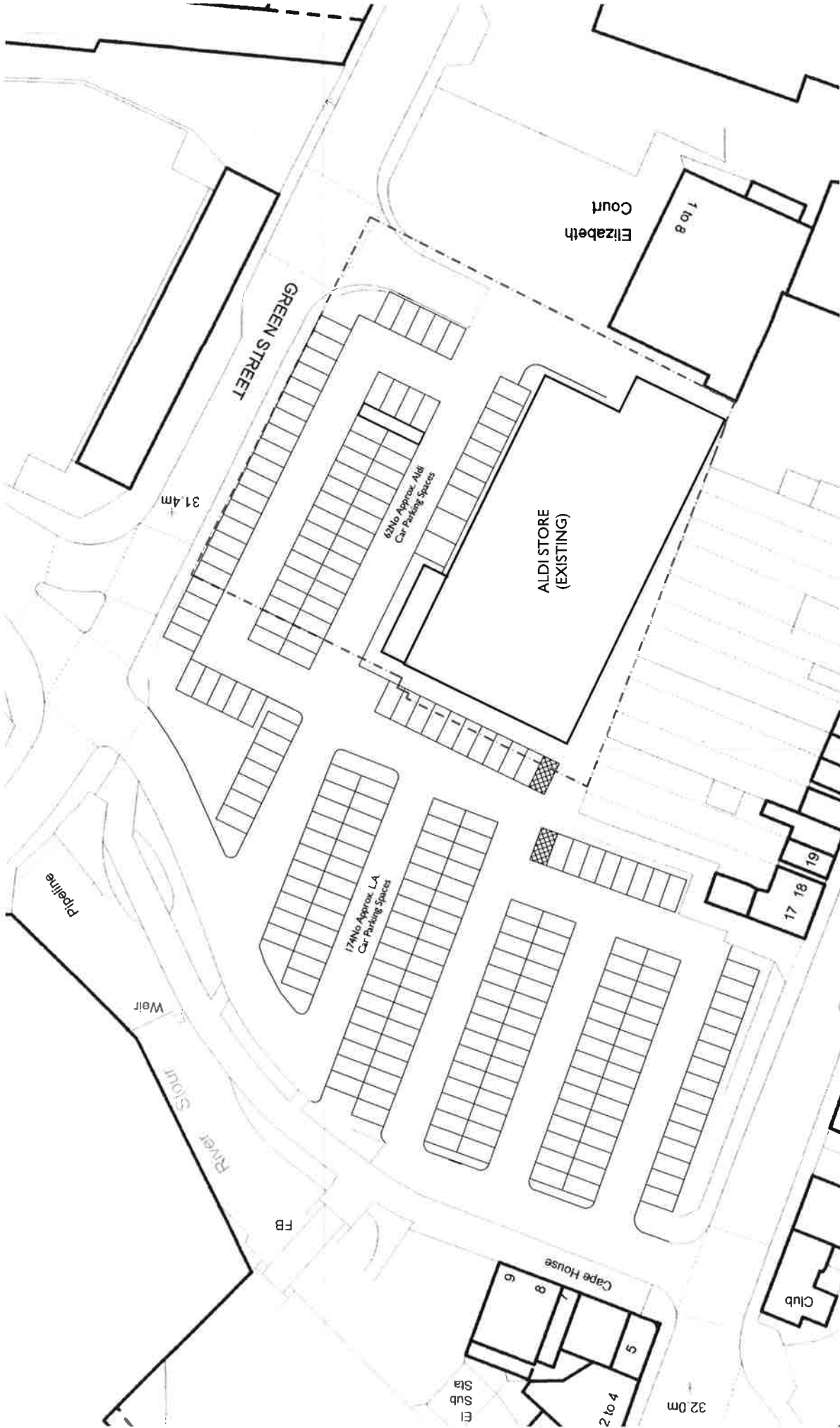
There is no requirement to consider an Equality Impact Assessment.

9. CONSULTEES

10.1 Cabinet Member for Planning and Economic Regeneration
10.2 Legal team.

10. BACKGROUND PAPERS

Layout plans – Existing Site Layout and Feasibility



SCALE 1:500 @ A3 DRAWN NSH NORTH

DATE 25-07-2011 CHECKED

DWG No. Y11A06 - EXTG - 05 REV



CLIENT ALDI STORES LIMITED

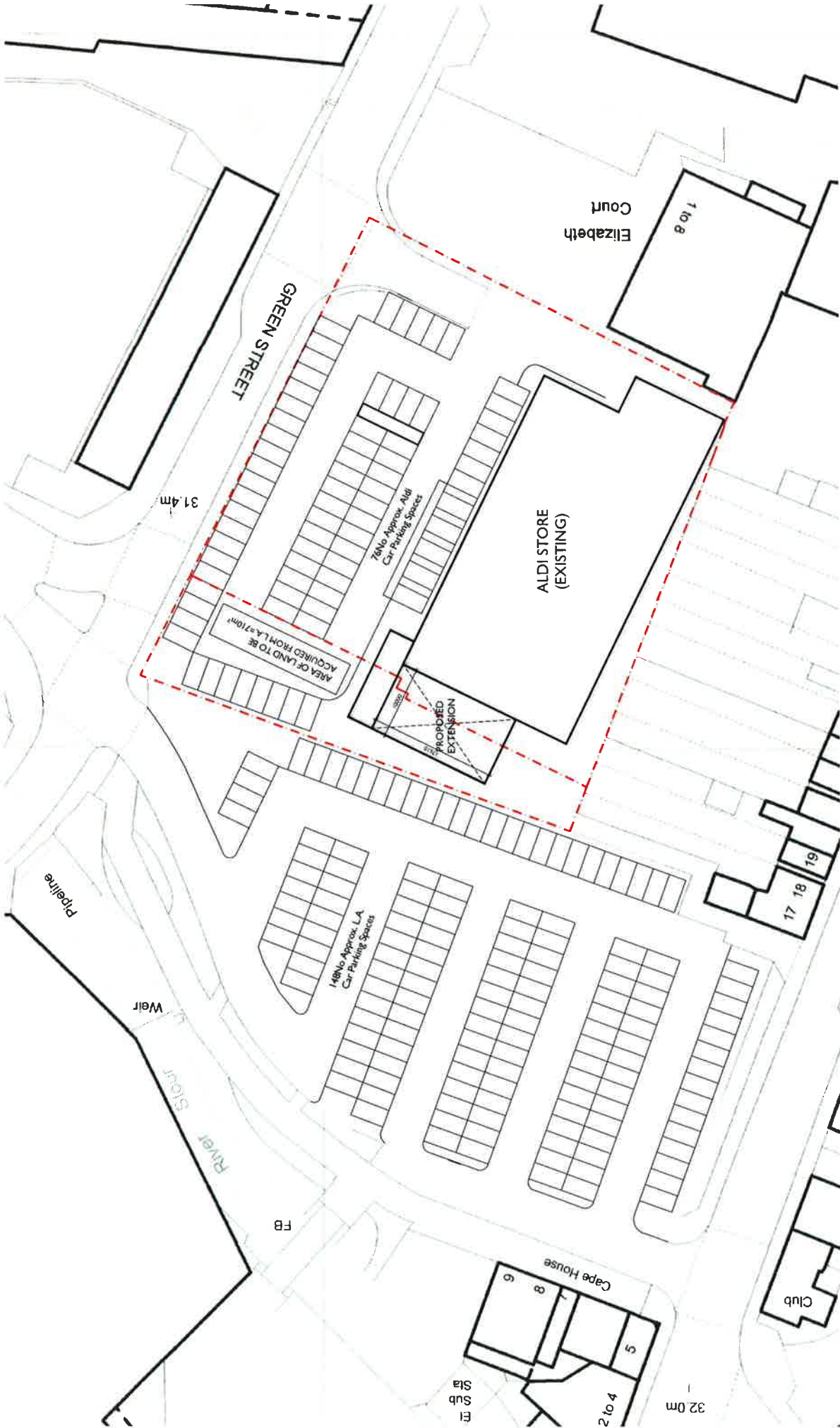
PROJECT GREEN STREET, KIDDERMINSTER

TITLE EXISTING SITE LAYOUT

TEL - 0121 747 1943 FAX - 0121 747 1944 www.dalkin-scotton.co.uk

DALKIN SCOTTON PARTNERSHIP ARCHITECTS LIMITED
305 FORT DUNLOP FORT PARWAY BIRMINGHAM B24 9QT

ALL DRAWINGS TO BE MADE IN CONFORMANCE WITH ALL RELEVANT REGULATIONS, STANDARDS AND SPECIFICATIONS UNLESS OTHERWISE SPECIFIED. THIS DRAWING IS THE PROPERTY OF DALKIN SCOTTON PARTNERSHIP ARCHITECTS LIMITED. COPYRIGHT IS RESERVED BY THEM AND THE DRAWING IS ISSUED ON THE UNDERSTANDING THAT IT IS NOT TO BE REPRODUCED, REPRODUCED OR TRANSMITTED IN ANY FORM OR BY ANY MEANS WITHOUT THE WRITTEN CONSENT OF DALKIN SCOTTON PARTNERSHIP ARCHITECTS LIMITED.



SCALE 1:500 @ A3 DRAWN NSH NORTH
 DATE 26-07-2011 CHECKED
 DWG No. Y11A06 - FEAS - 06 REV



CLIENT ALDI STORES LIMITED
 PROJECT GREEN STREET, KIDDERMINSTER
 TITLE FEASIBILITY 06

DALKIN SCOTTON PARTNERSHIP ARCHITECTS LIMITED
 305 FORT DUNLOP FORT PARKWAY BIRMINGHAM B14 9QT
 TEL - 0121 747 1943 FAX - 0121 742 1944 www.dsapartnership.co.uk

THIS DRAWING IS THE PROPERTY OF DALKIN SCOTTON PARTNERSHIP ARCHITECTS LIMITED. ANY REUSE OR REPRODUCTION OF THIS DRAWING WITHOUT THE WRITTEN CONSENT OF DALKIN SCOTTON PARTNERSHIP ARCHITECTS LIMITED IS STRICTLY PROHIBITED. THE DRAWING IS TO BE READ IN CONJUNCTION WITH ALL RELEVANT CONSULTANTS' AND ENGINEERS' DRAWINGS.